

# What will I see when I visit Tatton Park Mansion?

Thank you for coming to see us in Tatton Park. Tatton Park is a country estate near Knutsford in Cheshire, with a large Mansion, Farm and Old Hall. There are lots of things for you to see and do here, some of which you may not have seen before. This booklet explains what you might see during your visit to help you really enjoy your day with us.

## Arriving at Tatton Park

You will travel to Tatton Park by car or coach. Look out for the brown signs saying Tatton Park, as you get near to the site. Your driver will stop at the gates to buy a ticket or tell the gatekeeper the name of your school and where you are going.

As you go through the gates you will cross over a bumpy cattle grid. This is here to stop the deer and sheep escaping from the park. You will then drive up a long drive. Look out for our deer on either side of the drive.



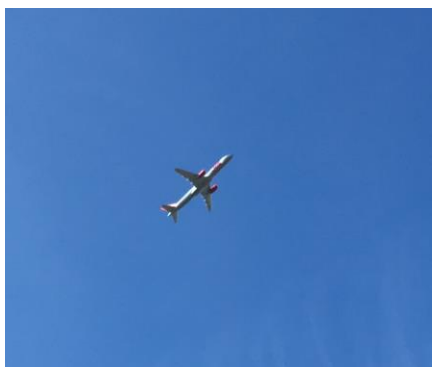
A red signpost on the left will tell you the driver which way to go. Left is the Old Hall, straight on is the Mansion and the Farm.





If you are visiting with your family you will go straight on to the main car park. When you see the Mansion on the left get ready for the bumps as you drive over another cattle grid. This is to stop the deer wandering into the visitor areas.

Tatton Park is very close to Manchester Airport and the aeroplanes fly very low over here as they are taking off and landing. See if you can read the words on the side of the aeroplanes to see which airline they are flying with. Look out for white smoke trails in the sky, which are made by the engines of the aeroplanes as they fly past.

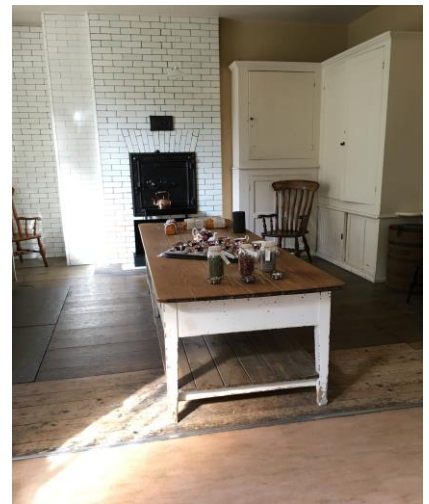
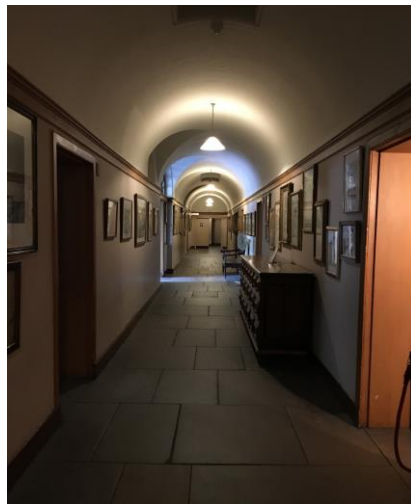


Once your coach or car has parked in the Car Park you will be able to start your day at Tatton Park. If you are visiting the Mansion you may be dressed in costume and be pretending to be a servant for the day. You will be met at the coach by one of the Tatton Park Education Team, who will be in costume and will be playing the part of the Housekeeper or Butler for the day to show you what life was like for Victorian servants working in a big house. To get to the Mansion you will walk through the trees to the Stableyard, which contains toilets, shops, rooms (where you might be having your lunch), carousels, restaurant and the entrance to the gardens. The Stableyard is covered in cobbles, which are very bumpy and were used to make roads in the past. Can you imagine driving for miles over these in a carriage pulled by horses?





When you reach the Mansion you will be led down some steep steps and into the cellars. The cellars are where the servants would be based, they are very plain but do have lights. When you visit areas in the rest of the Mansion you will see a lot of differences in the way the servants lived and the way the rich Egertons lived.



During your day as a servant, you may be given jobs to do by the Housekeeper and Butler, such as cleaning the floors and polishing the silver, baking scones and looking after the bedrooms. At the end of the visit you will be taken back to the coach, collecting your lunch boxes from the Barn Rooms on the way, if necessary.

We hope you really enjoy your day with us at Tatton Park.